

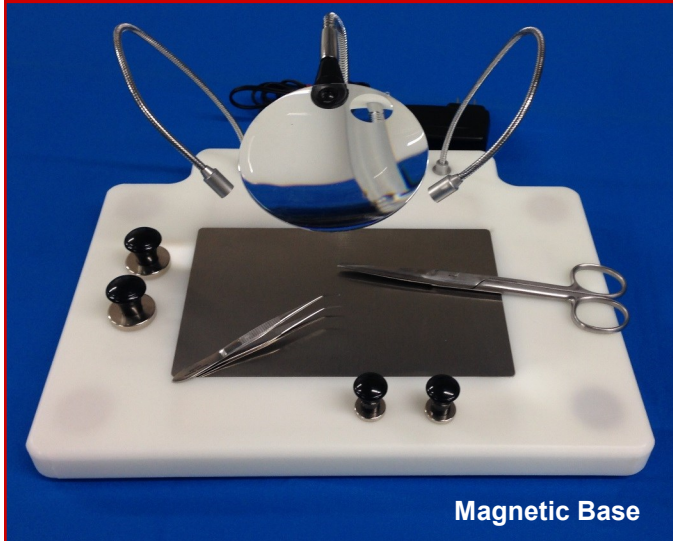
*Grace
Boards*

The New Standard

*for small animal surgery, procedure,
& dissection platforms*

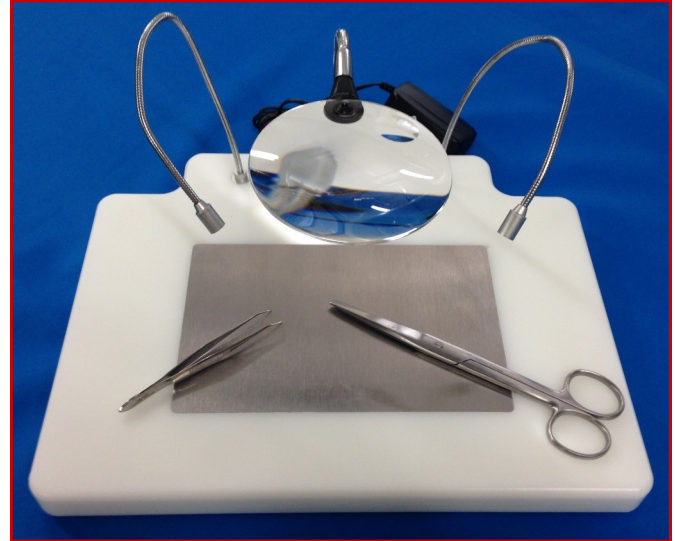
Small Animal Surgery Boards

Warming Thermal Plate or Cooling Hypothermic Plate

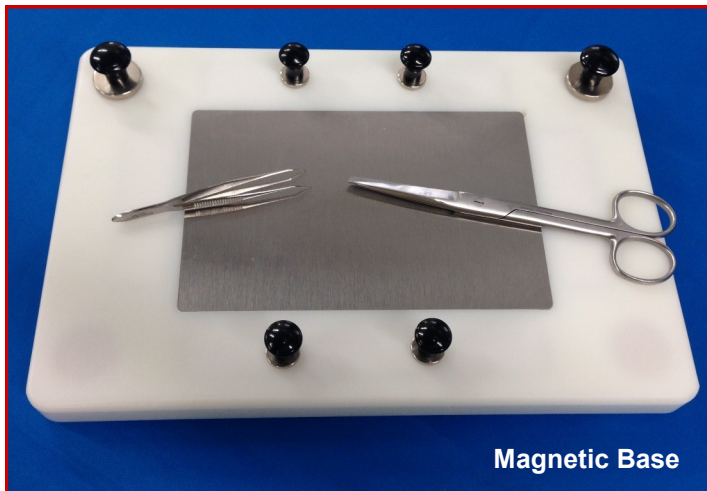


Magnetic Base

ORDER Cat#: **GSM2**

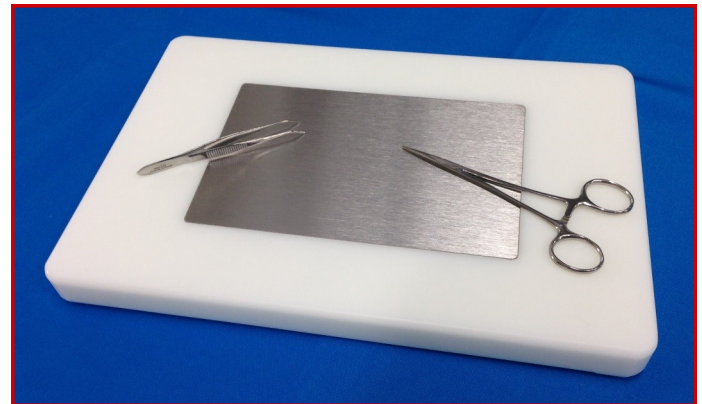


ORDER Cat#: **GSS2**



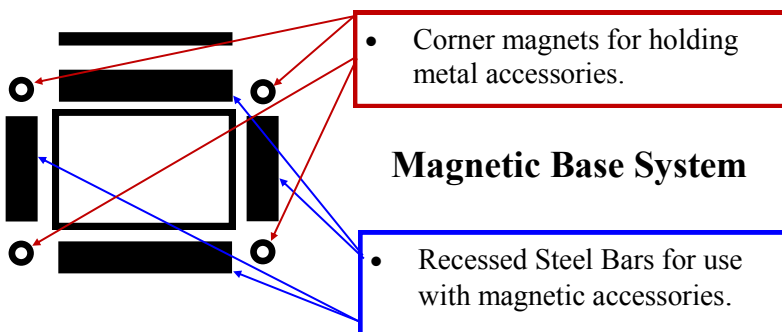
Magnetic Base

ORDER Cat#: **GSM1**



ORDER Cat#: **GSS1**

Grace Boards are made of 1" thick High Density Polyethylene (HDPE) with excellent chemical resistance.



- Corner magnets for holding metal accessories.

Magnetic Base System

- Recessed Steel Bars for use with magnetic accessories.

ORDER:

Phone: 607.324.6752

Fax: 607.324.6753

Email: aims@animalid.com

Hypothermic Surgery

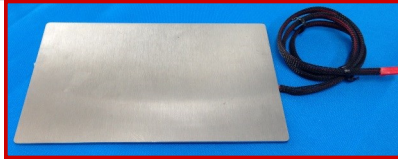
Hypothermic Cooling Plate Option

Grace Small Animal Surgery Boards

Cat#	Description	Price
GSM2	Grace Surgery Board w/ LED, Magnifier, & Magnetic Base System Two Flexible LED lights - provides direct illumination with no shadows and no heat. Flex arm, non-obstructive rimless magnifying glass (main lens: 2.3X, inset lens: 4.0X). (Allows continuous eye contact with object when moving into magnification area). Non-skid feet for added stability. Universal input power supply (100 - 240 VAC, 50-60 Hz). Size: 12" (L) x 9.5" (W). Includes 1x Magnetic Stainless Steel Warming Plate (7" x 4"), 1 Space Gel Heating Pad, & Suction cup limb restraints. <i>Includes Magnetic Base System.</i>	
GSS2	Grace Surgery Board w/ LED, & Magnifier Two Flexible LED lights - provides direct illumination with no shadows and no heat. Flex arm, non-obstructive rimless magnifying glass (main lens: 2.3X, inset lens: 4.0X). (Allows continuous eye contact with object when moving into magnification area). Non-skid feet for added stability. Universal input power supply (100 - 240 VAC, 50-60 Hz). Size: 12" (L) x 9.5" (W). Includes 1x Magnetic Stainless Steel Warming Plate (7" x 4"), 1 Space Gel Heating Pad, & Suction cup limb restraints. <i>Does not include Magnetic Base System.</i>	
GSM1	Grace Surgery Board w/ Magnetic Base System Non-skid feet for added stability. Size: 12" (L) x 8" (W). Includes 1x Magnetic Stainless Steel Warming Plate (7" x 4"), 1 Space Gel Heating Pad, & Suction cup limb restraints. <i>Includes Magnetic Base System.</i>	
GSS1	Grace Surgery Board Non-skid feet for added stability. 12" (L) x 8" (W). Includes 1x Magnetic Stainless Steel Warming Plate (7" x 4"), 1 Space Gel Heating Pad, & Suction cup limb restraints. <i>Does not include Magnetic Base System.</i>	

Thermal Plate Heating Options

Electric Powered Thermal Plate, Variable Temp Controller, Single Temp Power Supply (31°C, 35°C, or 39°C), Heating Gel Pad



DC Powered Thermal Plate

Cat#: **GETP**
Use with Cat#: GVT1, GPP1, GPP2, GPP3



Variable Temp Controller
31°C, 35°C, 45°C

Cat#: **GVT2**
Use with Cat#: GETP



Single Temp Power Supply
Provides a single constant plate temp.

31°C, Cat#: **GPP1**

36°C, Cat#: **GPP2**

41°C, Cat#: **GPP3**

Use with Cat#: GETP, NOTE: Final plate temp is dependent on room temp.



Space Gel Heating Pad
33-34°C

Cat#: **GGP1**
Can be reactivated. Use with standard thermal plate.

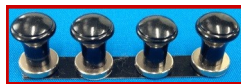


Cooling fins on bottom.

Hypothermic Cooling Plate

Use with ice, 3-4°C

Cat#: **GBHP**



Large Magnetic Drape Holders, Set of 4 Cat#: **GDHL**

Small Magnetic Drape Holders, Set of 4 Cat#: **GDHS**



Magnetic Limb Restraints, Set of 4 Cat#: **GLR1**

Accessories for Magnetic Base System

LED Light, Magnifier, Drape Holders, Limb Restraints



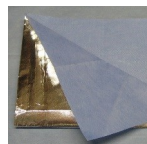
Magnetic Ultra Bright LED Light

Universal input power supply (100 - 240 VAC, 50-60 Hz)

Cat#: **GLED**

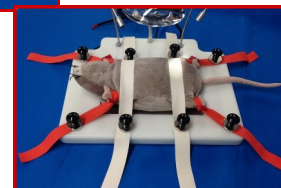
Magnetic Magnifier, (main lens: 2.3X, inset lens: 4.0X).

Cat#: **GMAG**



Thermal Drape
foil lined surgical drape
maintain proper body temp
2/pk (12"x16")

Cat#: **GBTD**



Elastic Hold Downs

Set of 6 orange with loop hole, 9"L x 3/4" W
Set of 4 white straps, 17"L x 1" W

Cat#: **GEHD**



ORDER:

Phone: 607.324.6752
Fax: 607.324.6753
Email: aims@animalid.com