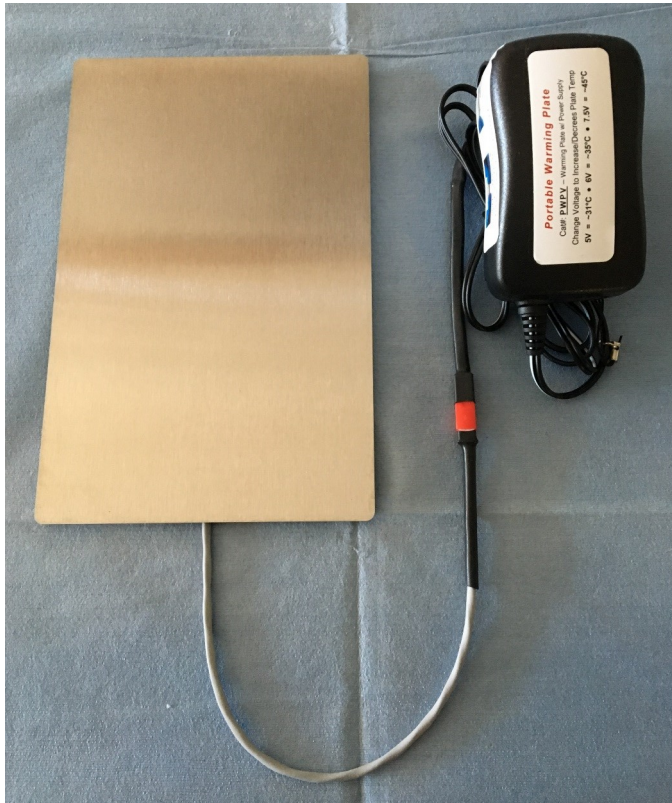


Portable Small Animal Warming Plate

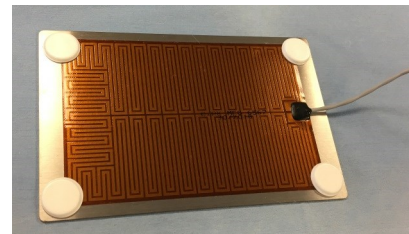
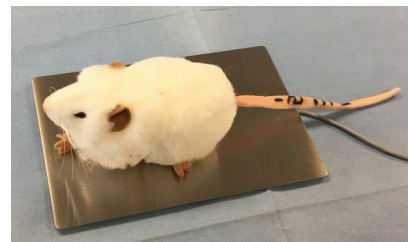
Prevent Hypothermia during surgery, post-surgery recovery & anesthesia induction.



Warming Plate Temp Range
~31°C • ~35°C • ~45°C

USE: Use under animal during surgery & post surgery to prevent hypothermia. Place in induction chamber during anesthesia to prevent hypothermia.

- Small enough to place under animals during stereotaxic surgery.
- Can be place on bench or in cage.
- Non-skid feet for added stability.
- HD power supply with universal input for use in any country (100 – 240 VAC, 50-60 Hz).
- Size: 7" X 4", Stainless Steel.



Cat#: **PWPV** Portable Warming Plate w/ Variable Power Supply



Phone: 607.324.6752

Fax: 607.324.6753

Email: aims@animalid.com

VISA, MasterCard, American Express & Official Purchase Orders Accepted.

Shipping is prepaid and added to invoice via UPS Ground (FOB: Hornell, NY, USA) unless otherwise requested.